

Base plate connector clamps

Aluminum / split assembly

SPECIFICATION

Identification No.

No. **2**: with 2 Stainless Steel-Clamping screws DIN 912

Aluminium

plastic coated
black, RAL 9005, textured finish **SW**

blank
matt shot-blasted **BL**

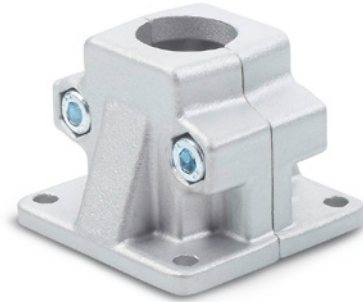
Clamping bores not machined

Socket cap screws DIN 912

Stainless Steel AISI 304

Hexagon nuts DIN 985

Stainless Steel AISI 304



INFORMATION

The clamping bores of the base plate connector clamps GN 165 are not machined and specially designed for construction tubes GN 990 (see page 1902) or DIN 2391, DIN 2395 and DIN 2462 respectively.

The square versions are also suitable for **profile systems**.

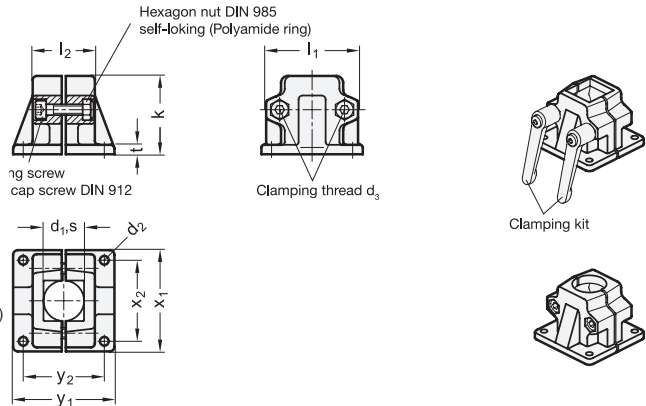
The standard clamping screws are socket cap screws DIN 912. They can be replaced by adjustable clamping kit GN 911 (see page 1874) (article code see table of dimensions).

ACCESSORY

- Clamping kit GN 911 (see page 1874)

TECHNICAL INFORMATION

- Stainless Steel characteristics (see page A26)



* Complete with colour index of the Base plate connector clamps (SW or BL)

SW
RAL9005

BL
blank

GN 165

Description	d1	s	d2	d3	k	l1	l2	t	x1	x2	y1	y2	Clamping kits for d3	△
GN 165-B20-2-*	B 20	-	7	M 8	58	69	46	7	75	60	75	60	GN 911-M8-40	300
GN 165-B25-2-*	B 25	-	7	M 8	58	69	46	7	75	60	75	60	GN 911-M8-40	295
GN 165-B30-2-*	B 30	-	7	M 8	58	69	46	7	75	60	75	60	GN 911-M8-40	290
GN 165-B40-2-*	B 40	-	11	M 10	91	98	70	14	115	90	119	90	GN 911-M10-63	945
GN 165-B42-2-*	B 42	-	11	M 10	91	98	70	14	115	90	119	90	GN 911-M10-63	905
GN 165-B45-2-*	B 45	-	11	M 10	91	98	70	14	115	90	119	90	GN 911-M10-63	878
GN 165-B48-2-*	B 48	-	11	M 10	91	98	70	14	115	90	119	90	GN 911-M10-63	840
GN 165-B50-2-*	B 50	-	11	M 10	91	98	70	14	115	90	119	90	GN 911-M10-63	810
GN 165-V20-2-*	-	V 20	7	M 8	58	69	46	7	75	60	75	60	GN 911-M8-40	300
GN 165-V25-2-*	-	V 25	7	M 8	58	69	46	7	75	60	75	60	GN 911-M8-40	285
GN 165-V30-2-*	-	V 30	7	M 8	58	69	46	7	75	60	75	60	GN 911-M8-40	270
GN 165-V40-2-*	-	V 40	11	M 10	91	98	70	14	115	90	119	90	GN 911-M10-63	920
GN 165-V45-2-*	-	V 45	11	M 10	91	98	70	14	115	90	119	90	GN 911-M10-63	885
GN 165-V50-2-*	-	V 50	11	M 10	91	98	70	14	115	90	119	90	GN 911-M10-63	880

Weight BL

